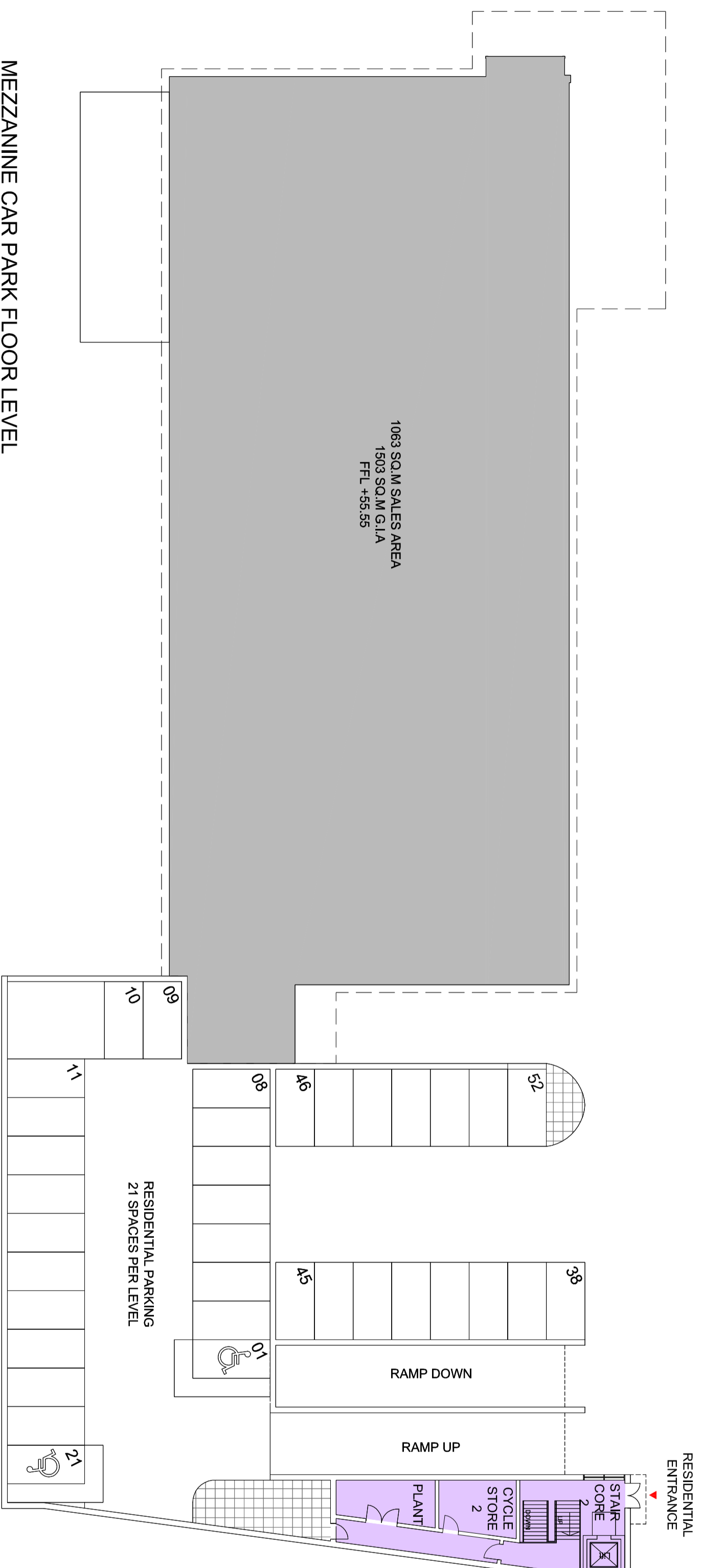




RESIDENTIAL	
Stair Core:	42.0 m ²
Plant Room:	17.2 m ²
Cycle Store:	17.0 m ²
RESIDENTIAL PARKING	
Standard Parking:	19 Spaces
Disabled Spaces:	2 Spaces
Total Parking:	21 spaces

- LIDL Demise
- Residential



REV	DATE	DESCRIPTION	BY
		IN CASE OF DOUBT OR DISCREPANCIES PLEASE REFER TO ARCHITECT FOR INSTRUCTIONS. THIS DRAWING SHOULD NOT BE SCALED. THIS DRAWING IS COPYRIGHT.	

- 01 DESIGN
- 02 DESIGN CONCLUSION
- 03 PLANNING

03. PLANNING

- 01 PRELIMINARY
- 02 FOR COMMENT
- 03 FOR APPROVAL

03. FOR APPROVAL

PROJECT:
**PROPOSED LIDL STORE AT
 BRIGHTON ROAD
 SOUTH CROYDON
 CR2 6ES**

DRAWING TITLE:
**PROPOSED UPPER GROUND
 FLOOR PLAN**

boyesirregees
ARCHITECTS

4th Floor, Greystairs House
 Greystairs Road,
 Cardiff, CF10 3AL

Tel: 029 2055 8900 Fax: 029 2039 9592
 www.boyesirregees.co.uk

Registered office, Ardmore Way, No. 295, East (England & Wales)

DATE: **16.05.2014** SCALE: **1:250 @A2**

JOB NO.: **5074** DRAWN BY: **WW**

DWG NO.: **5074 PL 12** REV: **-**

CAD REFERENCE: Croydon_Architectural_Planing_2_11kad
 Drawing/Proposed Plans/12_16052014